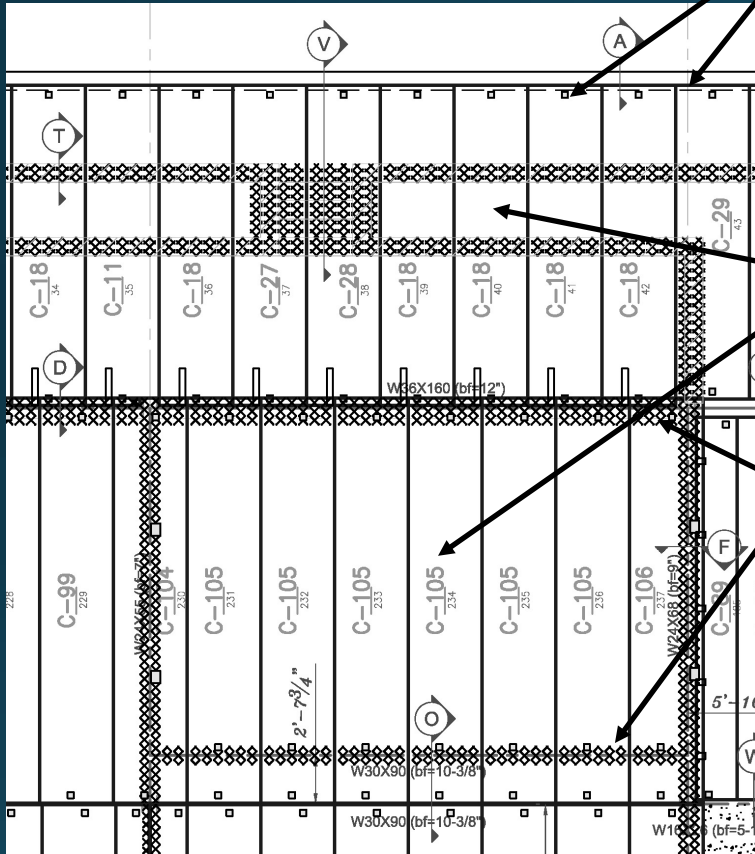


# Weepholes

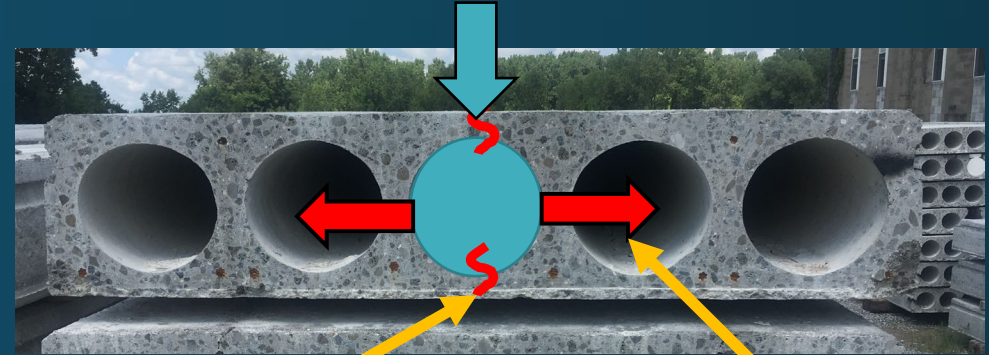


Ends can be closed off and trap water from weld plates or concrete cast against planks

Water can be trapped from cores filled solid during construction

Hatched areas are cores filled solid

Rain can get trapped in cores with solid ends



Cracks can form and "split" the panels

Water can freeze in cores and generate a large force from expanding ice



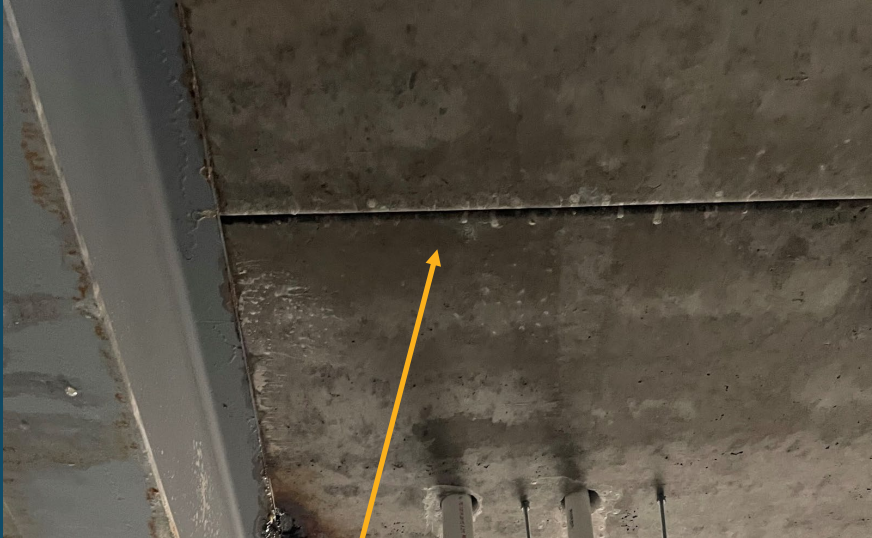
# Inspect Underside of Plank for Trapped Water in Cores



Moisture at weld plates

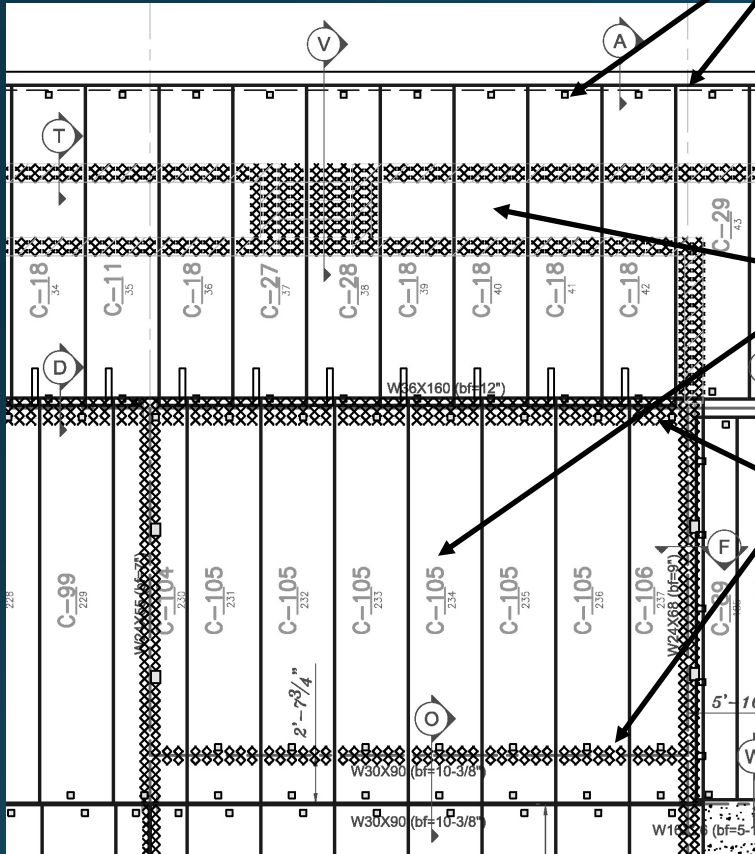


Efflorescence ("stalactites")



Damp Underside with darker saturated concrete

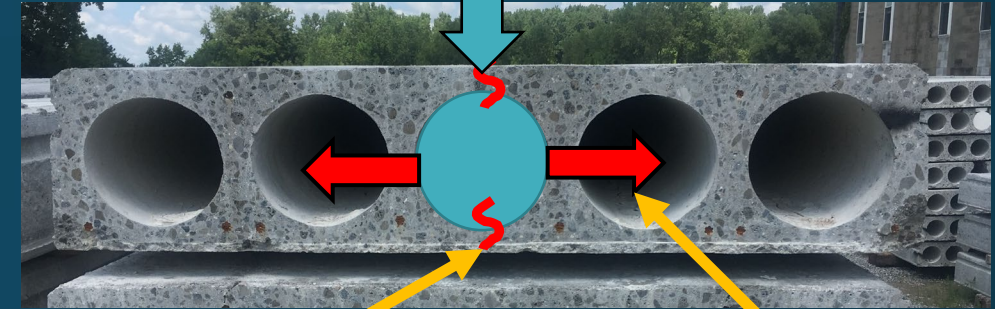
# Prevention



Ends can be closed off and trap water from weld plates or concrete cast against planks

Water can be trapped from cores filled solid during construction

Hatched areas are cores filled solid



Rain can get trapped in cores filled solid

Cracks can form and "split" the panels

Water can freeze in cores and generate a large force from expanding ice

- Recommendations
  - Limit core filling
  - Eliminate exposure to rain, snow and ice collecting on deck (weather proof)
  - Add weep holes